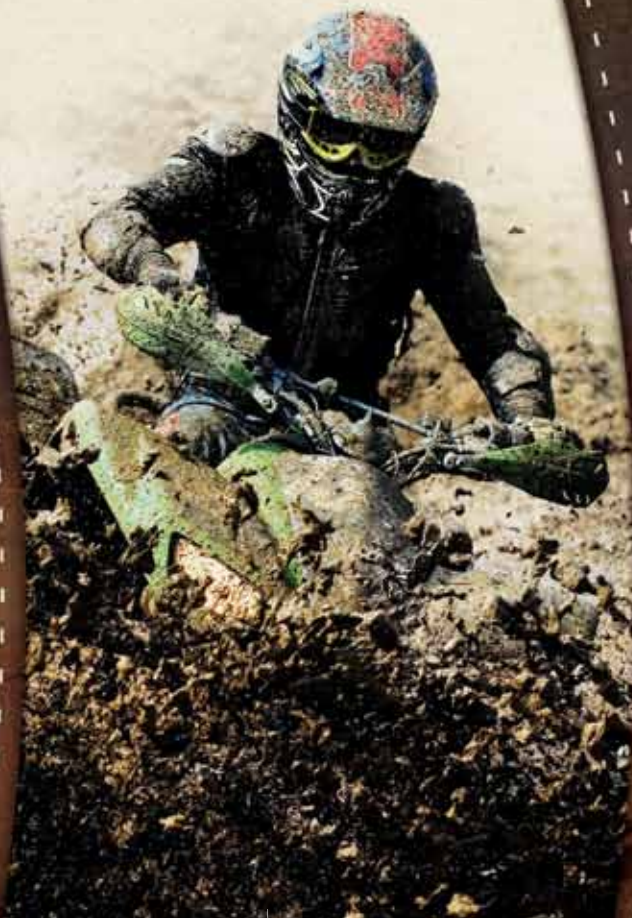


WOLF PACK

BY FOREST RIVER

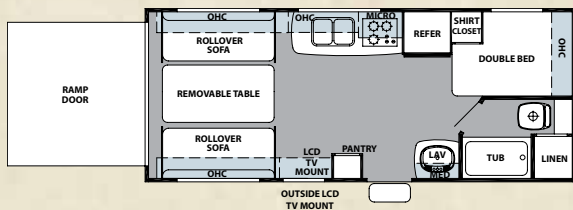
WOLF PACK

BY FOREST RIVER

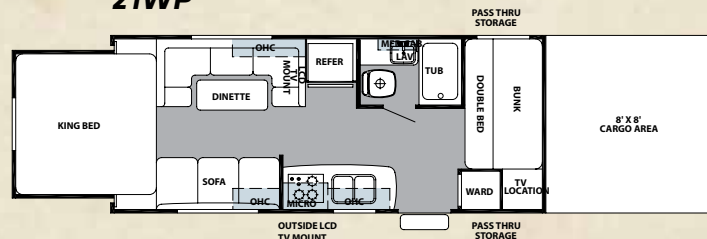


WOLF PACK TRAVEL TRAILER FLOORPLANS

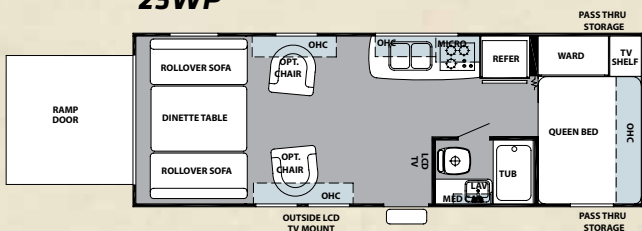
19WP



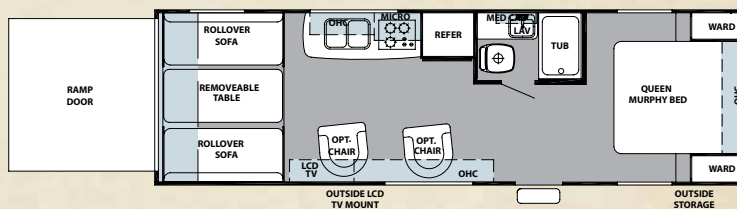
21WP



23WP



27WP



TRAVEL TRAILERS

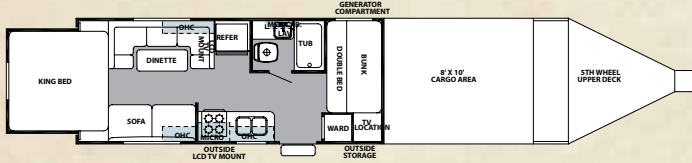
	T19WP	T21WP	T23WP	T27WP
Dry Hitch Weight	668 lbs.	604 lbs	865-lbs	930 lbs
Unloaded Vehicle Weight	5262 lbs.	5993 lbs	5616-lbs	5639 lbs
Cargo Carrying Capacity	2368 lbs	1611 lbs	2215-lbs	2253 lbs
Exterior Length	24'-11"	33'5"	28'-9"	31'
Exterior Height w/ AC	11'-1"	10' 9"	11'-1"	11'-7"
Exterior Width	102"	102"	102"	102"
Bedroom Interior Height	78"	NA	78"	76"
Grey Capacity	41gal	41gal	41gal	41gal
Black Capacity	31gal	41gal	41gal	31gal
Fresh Capacity	50gal	50gal	100gal	104gal
Cargo Area Size-Off DS	84"	NA	140"	84"
Cargo Area Size-DS	170"	NA	174"	269"
Storage Height	84"	NA	84"	93"

FIFTH WHEELS

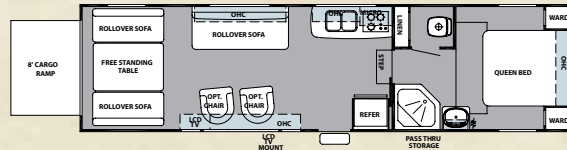
	F215WP	F295WP	F305WP	F306WP	F376WP	F396WP
Dry Hitch Weight	825 lbs	1462 lbs	1802lbs	2015lbs	2218lbs	2095lbs
Unloaded Vehicle Weight	7598 lbs	7838 lbs	8694lbs	11301lbs	11978lbs	13222lbs
Cargo Carrying Capacity	3347 lbs	3747 lbs	3049lbs	5893 lbs	5480lbs	4054 lbs
Exterior Length	39'-8"	33'-2"	35'	36' 5"	41'-2"	41'-7"
Exterior Height w/ AC	10'-10"	11'-10"	13' 4"	13'-4"	13'-4"	13'-4"
Exterior Width	102"	102"	102"	102"	102"	102"
Bedroom Interior Height	N/A	72"	76"	76"	76"	76"
Grey Capacity	41gal	41 Gal.	41 Gal.	41 Gal.	41 Gal.	41 Gal.
Black Capacity	41gal	41 Gal.	41 Gal.	41 Gal.	41 Gal.	41 Gal.
Fresh Capacity	50gal	104gal	104gal	100gal	100 gal	104gal
Cargo Area Size-Off DS	99"	180"	131"	132"	146"	146"
Cargo Area Size-DS	99"	214"	131"	132"	146"	146"
Rear Storage Height	Unlimited	92"	102"	102"	102"	75"

WOLF PACK FIFTH WHEEL FLOORPLANS

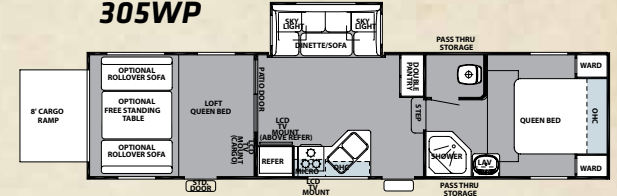
215WP



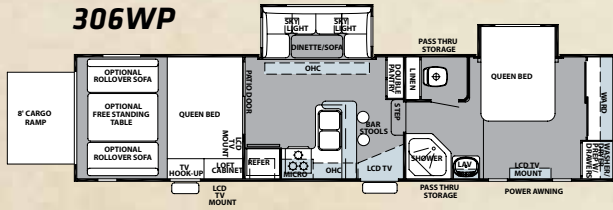
295WP



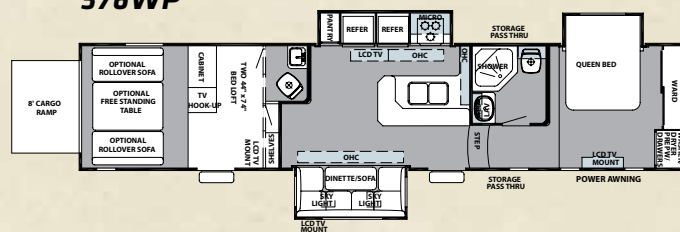
305WP



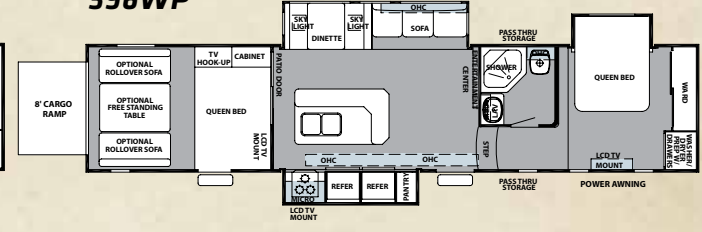
306WP



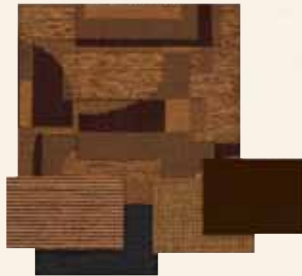
376WP



396WP



WOLF PACK INTERIOR DECOR



Earth Tan



Golden Espresso



Leaf Sand



Ryker Brown

WOLF PACK STANDARDS + OPTIONS

STANDARD EQUIPMENT

FW	TT	
S	0	LCD TV
S	S	Stereo w/DVD/CD/MP3 Hook up
S	S	Outside Tv Bracket with Video/Antenna Hook-up
S	S	2-Exterior Speakers
S	S	Satellite/Cable Hook-up
S	S	Black Tank Flush
S	S	Power Vent in Bath
S	0	6 Gal. DSI Water Heater
- -	S	6 Gal. Gas Water Heater
S	S	110 gallon fresh water (most models)
S	0	50 Amp Service
S	0	Forced Heat Enclosed Tank
S	0	Gas Pump Fuel station w/Generator Direct
S	0	Ducted A/C
S	S	13.5K A/C
S	0	Power Awning
S	S	Microwave
S	S	Double Door Refrigerator
S	0	Electric Front Power Tongue/Hitch Jack (Std. On Fifthwheels)
S	- -	Washer/Dryer's Prep
S	S	Porch Light
S	S	Outside GFI Outlet
S	0	Exterior Spray Port
S	0	Range Hood
S	S	Double Steps / Triple Step (5th Wheel)
S	S	15" Tires
S	S	15" Aluminum Rims
S	S	3/8" walkable roof decking
S	S	5/8" tongue and groove plywood floor decking

FW	TT	
S	S	Radius truss roof rafters
S	0	Generator (std 4.0 on Fifth wheels Opt. on 295WP)
S	S	Powder coated frame
S	S	Extra Large Safety Glass Windows
S	S	Exterior Sewer Hose Holder Under Mount
S	S	TV/Radio Antenna
S	S	Water Heater Bypass
S	S	LP Leak Detector
S	S	Cabon Monoxide Dectector
S	S	Coat Hooks
S	S	Full Extension Drawer Guides
S	S	Dual LP Bottles

OPTIONAL EQUIPMENT

0	0	Oven
0	0	Bathroom Fantastic Vent Fan
0	0	10,000 Gal. Water Filter System
0	0	Rear Ladders (Backers Std. On All)
0	0	10 Gal. DSI Water Heater
0	0	RVQ Prep
0	0	RVQ Outside Grill
0	0	Night Shades
0	0	Skylight Over Tub
0	- -	12v Ceiling Fans (N/A in Bedrooms or trailer models)
0	0	Spare Tire
0	0	Heated Holding Tank Pads
0	0	Large Grab Handles
0	0	Scare Light

FW	TT	
0	0	Raised Panel Refer
0	0	Screen Wall
0	0	Sink Covers (1 or 2)
0	0	Range Covers
0	0	Executive Recliner (Std. On Some Models)
0	0	Lazy Boy Recliner
0	0	Serta Mattress
0	0	Electric Leveling Jacks
0	0	12v Battery Disconnect
0	0	Large Double Door Refrigerator
- -	0	Outside Shower
0	- -	Washer/Dryer's (N/A on trailer models)
0	- -	Up-Grade Lighting Package (N/A on trailer models)
0	- -	Bedroom 2nd A/C (N/A on trailer models)
0	- -	2nd A/C Prep (N/A on trailer models)
0	0	15K A/C IPO 13.5K
0	0	Tinted Thermopane Windows
0	0	Convection Oven
0	0	Rear Power Bed

SOUTHWEST PACKAGE

Spare Tire and Carrier
 Scare Light (Rear)
 Gas Pump Fuel Station w/Generator Direct
 Sky Light Over Tub
 Removable Edge Carpet
 Fuel Timer w/Emergency Cut Off



Forest River, Inc. encourages our customers to purchase their Forest River products from a local dealership whenever possible for the following reasons:

It is the goal of Forest River, Inc. that all of our RV owners fully enjoy the RV experience and that customer satisfaction meets or exceeds their expectations!

- 1) Forest River, Inc. dealers are independently owned and operated businesses so priority service and scheduling is at their discretion and is often provided to customers that purchased their unit at that dealership.
- 2) Purchasing locally allows customers to establish meaningful relationships with a dealer, enhancing the RV experience through assistance with product questions, user tips or RV regulations for your state or country, and much more!
- 3) Canadian customers must meet requirements to bring an RV purchased out of the country to their home. These requirements may involve additional inspections and certifications, taxes and fees. Your local Canadian Dealer is a professional at meeting these requirements.
- 4) Scheduling timely warranty repairs and adjustments through a local dealership provides far greater flexibility and convenience to you, the customer!



PRE-DELIVERY INSPECTION FACILITY

20,000 square feet of quality assurance. The bare essentials for a premium product. This state-of-the-art facility gives immediate daily feedback to production for quality assurance in every unit built.



Learn More
 Scan this barcode using a QR Reader on your smart phone to learn more about Forest River.



A Berkshire Hathaway company.

Forest River, Inc. 402 Lehman Avenue Topeka, IN 46571
www.forestriverinc.com/wolfpack www.forestriveraccessories.com

All illustrations and specifications contained in this literature are based on the latest product information at time of publication. Forest River reserves the right to make changes in prices, colors, materials, equipment and specifications at anytime without notice and assumes no responsibility for any error in this literature. All units are shipped F.O.B. Goshen, Indiana.

CONSULT YOUR LOCAL DEALER FOR WARRANTY INFORMATION. LITHO: U.S.A. FOR 0916



YOUR WOLF PACK DEALER